

SCL-240MA-TC64 Smart BIPV

*High efficiency solar modules
for perfect roof integration*

10 years Product Warranty
30 years linear performance Warranty

Outstanding aesthetics

Available in anthracite or terracotta color
Ultra-matte anti-reflective surface solar glass
No unsightly aluminum profiles

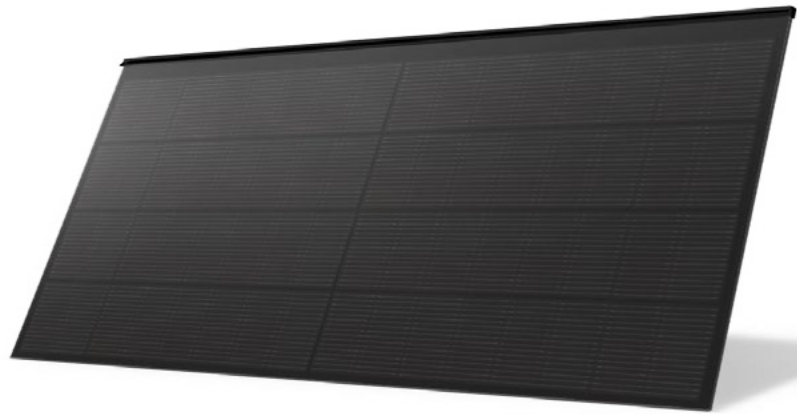
High performance

High efficiency M10 Topcon
half-cut cells with efficiency 23.5%

Double-glass Structure for better protection
of the cells against micro-cracks, superior resistance
to hail and heavy snow loads

Swiss design

High quality components, original Stäubli MC4 connectors



The Suncell solar tile with its smart BIPV system is the best way to discreetly and sustainably transform a roof into a solar power plant. Manufactured with high-quality components, the Smart BIPV system is characterized by the simplicity of its design, guaranteeing the robustness and durability that is expected from the best construction materials to protect a building.

The structure of the module, with a double layer of tempered glass, allows it to withstand the worst snow and wind load stresses while ensuring full protection and maintenance of the performance of the cells in the long term. The extremely strong hooks and water drainage profiles are made of recyclable aluminum alloy to industrial standard 6061, with an almost unlimited service life.

Complete 3D drawing and dimensioning software available online: PV Designer 3D - www.suncell.ch




Anthracite color SCL-245-DH8N-64 AN



Terracotta color SCL-245-DH8N-64 TC

SCL-240MA-TC64 Smart BIPV

Operating parameters

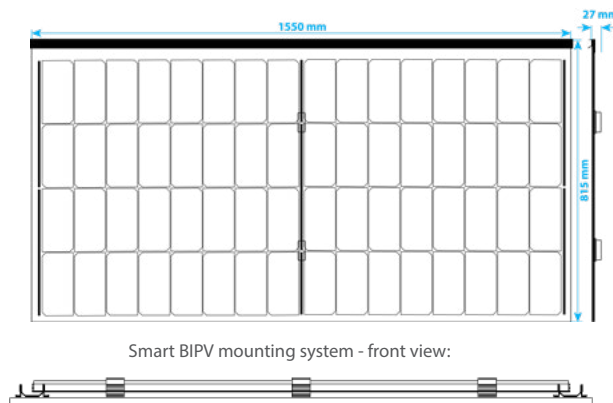
Operating temperature: -40° ~ +85°
Output power tolerance: -0 ~ + 5W
Voc and Isc tolerance: ±3%
Max.voltage system: DC1000V (IEC)
Rated maximum series fuse: 15A
Rated cell operating temperature: 45 ±2°C
Safety class: Class II 

Mechanical parameters

Cells: 64 half-cut Topcon cells, dimensions 182 x 91 mm
Junction box: split, IP68, 2 diodes
Connectors: MC4 Stäubli
Output cables: 4mm², length 1200mm
Glass: Double glass, 3.2 + 3.2 mm tempered, ultra-matte frontglass GU 5
Encapsulant: POE
Weight: 25.4 kg
Dimensions: 1550 x 815 x 8 mm
Visible Surface: 1550 x 785 mm
Packing: 25 modules per pallet

Module design

SCL-240MA-TC64
 Can be combined with SCL-240MA-TC48 to better fit roof width



Electrical parameters

Module Type	SCL-240MA-TC64 AN		SCL-240MA-TC64 TC	
	STC	NOCT	STC	NOCT
Test Conditions *				
Maximum power (Pmax / W)	240	181	175	138
Open circuit voltage (Voc / V)	23.04	22.05	20.35	22.05
Short circuit current (Isc / A)	12.45	10.29	8.59	8.24
Voltage at maximum power (Vmp / v)	20.35	18.8	23.04	18.8
Current at maximum power (Imp / A)	11.79	9.63	9.06	7.34
Module efficiency (%)	20.1%		14.4%	

* STC(Standard test Conditions): Irradiance 1000W / m², cell temperature 25°C, spectrum at AM 1.5

NOCT (rated cell operating temperature): Irradiance 800 W / m², ambient temperature 20°C, spectrum at AM 1.5, wind at 1 M / S

Rated temperature (STC)

Temperature coefficient Isc + 0.045 % / °C
Temperature coefficient Voc -0.25 % / °C
Temperature coefficient Pmax -0.30 % / °C

Mechanical strength

Maximum static pressure load 10000 Pa / m²
Maximum static load in suction 5400 Pa / m²
Hail resistance Test RG5, 50 mm hailstones at 30.8 m / s

Certificates and warranties

Quality control, static resistance IEC 61215
Safety of operation IEC 61730
Fire safety DIN EN 13501-1:2019: B s1 d0
Product warranty 10 years
Performance guarantee 25 years at 82.3% of minimum initial power



MA-IPG64TC-EN 03-2026

Manufactured in China under licence
 Suncell® is a registered trademark of Suncell Energy Ltd, Montreux, Switzerland
 Contact: Suncell Energy Ltd - info@suncell.ch - www.suncell.ch

Note: Due to a continuous improvement program, technical data can be changed any time. Suncell Energy Ltd is entitled to make changes to this datasheet without notice. The buyer will require the applicable technical datasheet from the distributor, that shall be valid as contractual and technical documentation.

SUNCCELL®